

	RJ 714	10
	RJ614s	25
	RJ 611s	08
	Source 4 25/50	28
	Par 64 cp61	65
	ADB 1002 JHF	26
	ADB C201	09
	ADB ACP 1001	15
	ColourSource PaR	16
	Source Four Revolution	08
	Maquina de fumo	01
	Maquina de Haze	01
	Follow Spot	01

LISTA DE COR

PROJECTOR	COR	Nº
Source 4 - 25/50 Zoom	L027	08
ADB ACP 1001	L200	15
ADB THH 1002 JHF	L200	26
PAR64	L201	63
PAR64	L202	02
Source 4 - 25/50 Zoom	L202+R132	02
6115X	L203	08
Strand Lighting Alto PC Mk2	L203+R119+BD	09
Source 4 - 25/50 Zoom	L205	08
Source 4 - 25/50 Zoom	L201	10

NOTAS DE LUZ

- 1 Todos os fresnel sem palas e todos os pc com palas
- 2 São necessárias 40 bases de chão
- 3 Follow montado no lado direito da sala
- 4 Todos os par em paralelo, menos o central que fica individual
- 5 Cena aberta sem panejamento
- 6 Retroprojeção Video na 22
- 7 Projector Video entra na vara M6 com possibilidade de se fazer projecção frontal do camarate presidencial

Montanha Russa

FORMIGA ATÓMICA

Planta de Luz

José Álvaro Correia © 2018

Encenação Miguel Fragata
 Texto Inês Barahona
 Desenho de Luz José Álvaro Correia
 Adaptação Nuno Figueira

Montanha Russa

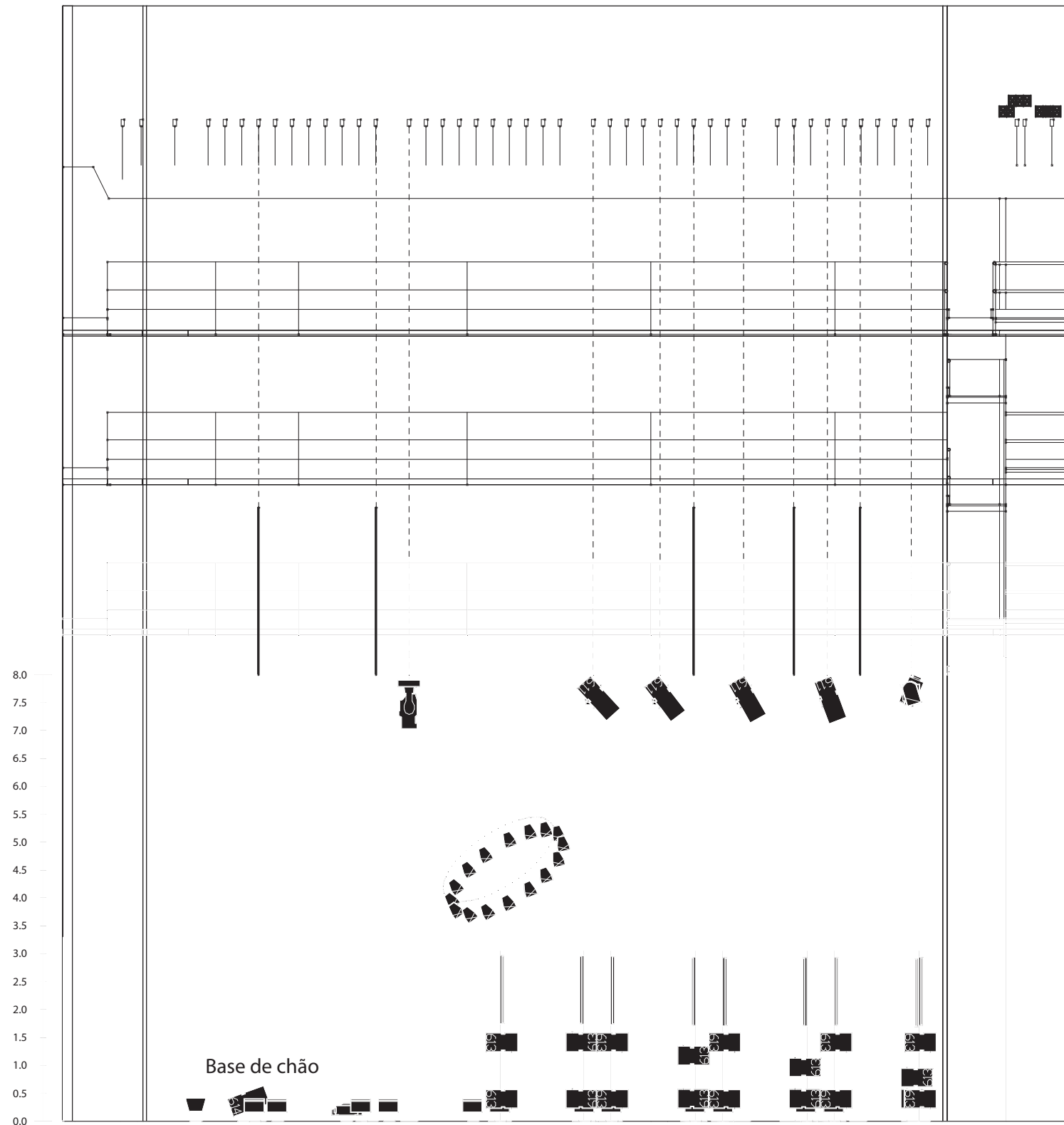
FORMIGA ATÓMICA



Encenação Miguel Fragata
 Texto Inês Barahona
 Desenho de Luz José Álvaro Correia
 Adaptação Nuno Figueira

Planta de Luz

José Álvaro Correia © 2018



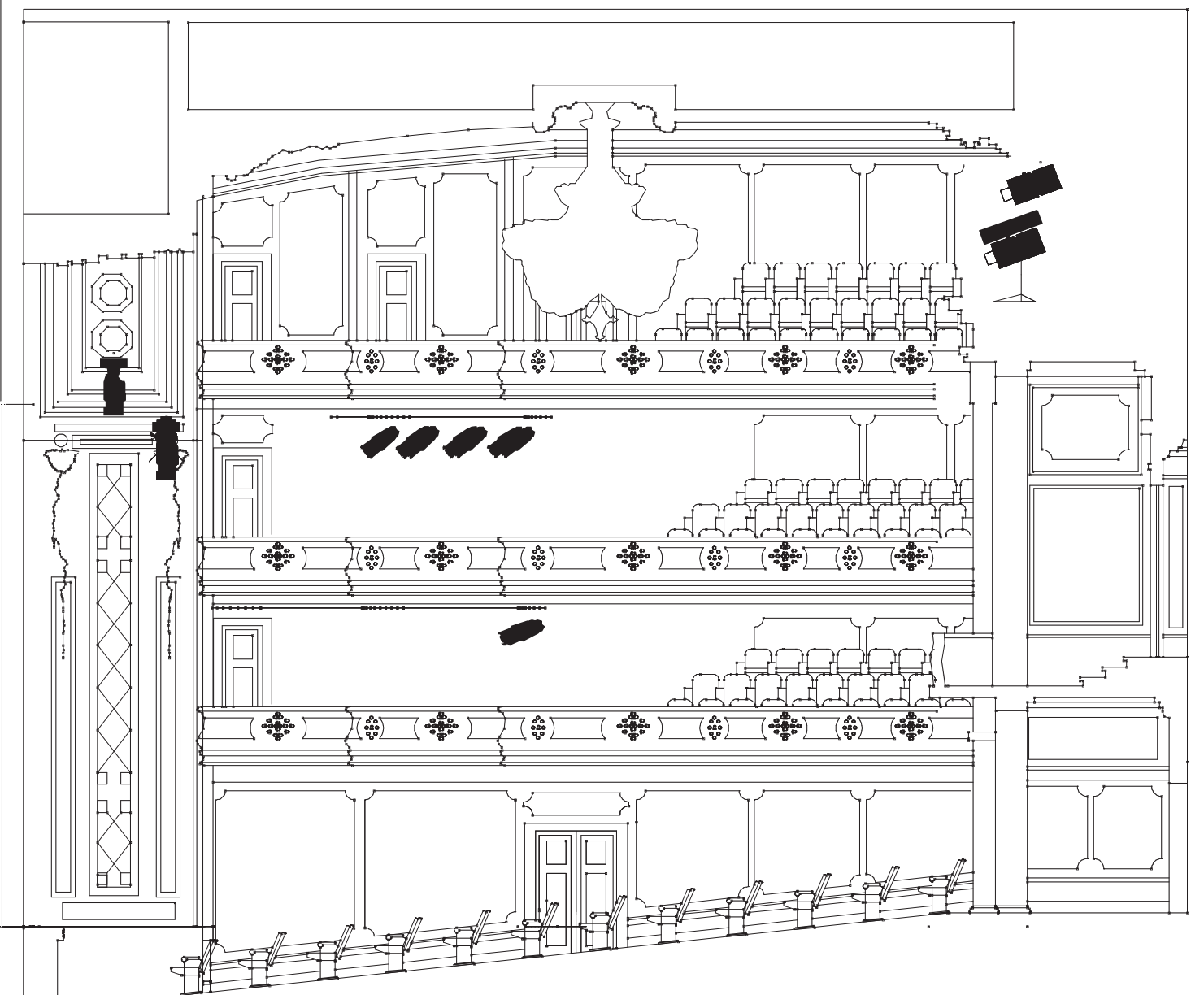
	RJ 714	10
	RJ614s	25
	RJ 611s	08
	Source 4 25/50	28
	Par 64 cp61	65
	ADB 1002 JHF	26
	ADB C201	09
	ADB ACP 1001	15
	ColourSource PaR	16
	Source Four Revolution	08
	Maquina de fumo	01
	Maquina de Haze	01
	Follow Spot	01

NOTAS DE LUZ

- 1 Todos os fresnel sem palas e todos os pc com palas
- 2 São necessárias 40 bases de chão
- 3 Follow montado no lado direito da sala
- 4 Todos os par em paralelo, menos o central que fica individual
- 5 Cena aberta sem panejamento
- 6 Retroprojeção Vídeo na 22
- 7 Projector Vídeo entra na vara M6 com possibilidade de se fazer projecção frontal do camarote presidencial

LISTA DE COR

PROJECTOR	COR	Nº
Source 4 - 25/50 Zoom	L027	08
ADB ACP 1001	L200	15
ADB THH 1002 JHF	L200	26
PAR64	L201	63
PAR64	L202	02
Source 4 - 25/50 Zoom	L202+R132	02
6115X	L203	08
Strand Lighting Alto PC Mk2	L203+R119+BD	09
Source 4 - 25/50 Zoom	L205	08
Source 4 - 25/50 Zoom	L201	10



1. PA System

1.1. FOH

It shall be a professional system, stereo and phase checked, able to produce high volume if necessary, according to the venue's size. It shall be necessary 108 dB evenly distributed throughout the venue. Full flown systems, line arrays are better. Near and out fills should also be provided. Sub bass on auxiliar send.

Ex: Meyer Sound; D&B, JBL, L Acoustics

1.2. Mixing Desk

We will travel with X32 Compact and will need 2 cat5e lines FOH/Stage.
Stage Box DL151, DL 155

1.3. Drive System

Meyer Galileo or Lake Contour.

Klark Teknik DN370

Amplification able to drive the system with a large headroom before saturation.

1.4. Intercom F.O.H / Stage Entrance

2. Stage

2.1 4 Wedges (1*12"+1*1"). (Meyer UPA o similar)

2.2 4 Speaker (1*12"+1*1") on speaker stands, 2 on each side of the stage(Meyer UPA)

2.3 Patch List

VIA	INSTRUMENTO	MICRO	OBS
1	Bass	SansampDI*	
2	Bass	M88*	Small Boom Stand
3	Drums L	Orchid DI*	
4	Drums R	Orchid DI*	
5	Guitar 1	M160*	Small Boom Stand
6	Guitar 2	Hallo*	Small Boom Stand
7	Key L	Orchid DI*	
8	Key R	Orchid DI*	
9	Korg	Orchid DI*	
10	Rafa Vocal	RE16*	Big Boom Stand
11	Manela Vocal	RE16*	Big Boom Stand
12	Helder Vocal	M88*	Big Boom Stand
13	Miguel Vocal	58*	Big Boom Stand
14	Vox 1	Beta58*	Straight Stand
15	Vox Fx		
16	Headset 1	DPA 4066+Wireless System	
17	Headset 2	DPA 4066+Wireless System	
18	Headset 3	DPA 4066+Wireless System	
19	Headset 4	DPA 4088+Wireless System	
20	Headset 5	DPA 4066+Wireless System	
23	Spare	DPA 4066+Wireless System	
24	Spare mão	Sure Beta58 Wireless	
25	Audience L	416	Big Boom Stand
26	Audience R	416	Big Boom Stand

* We bring these mics and DIs

MONTANHA RUSSA

TECHNICAL RIDER 2019 v3

2/2

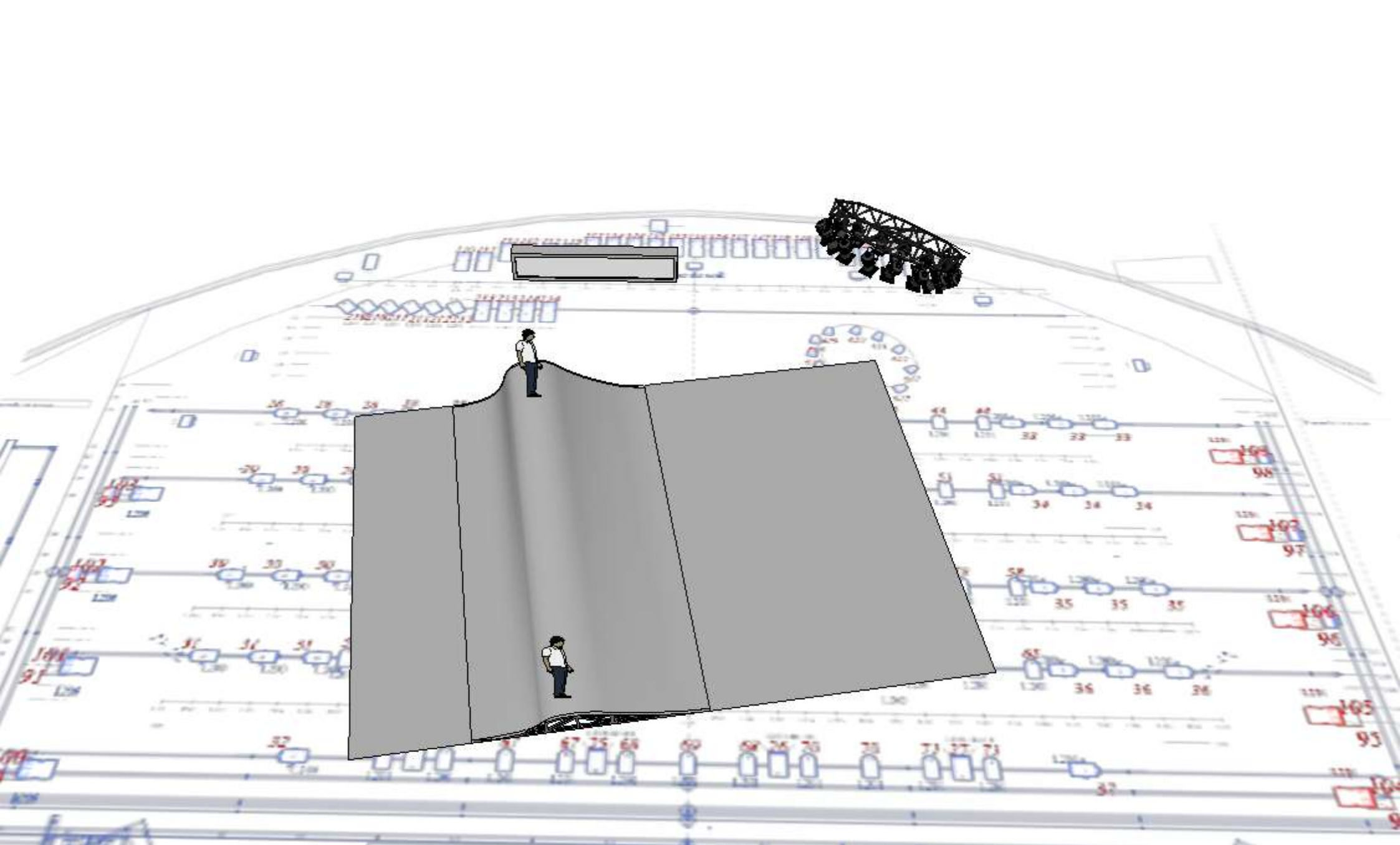
3 Any kind of recording/broadcasting of this show must be previously authorized by or management. Only THE FOH ENGINEER SHALL PROVIDE THE SIGNAL FEED FOR THIS RECORDING.

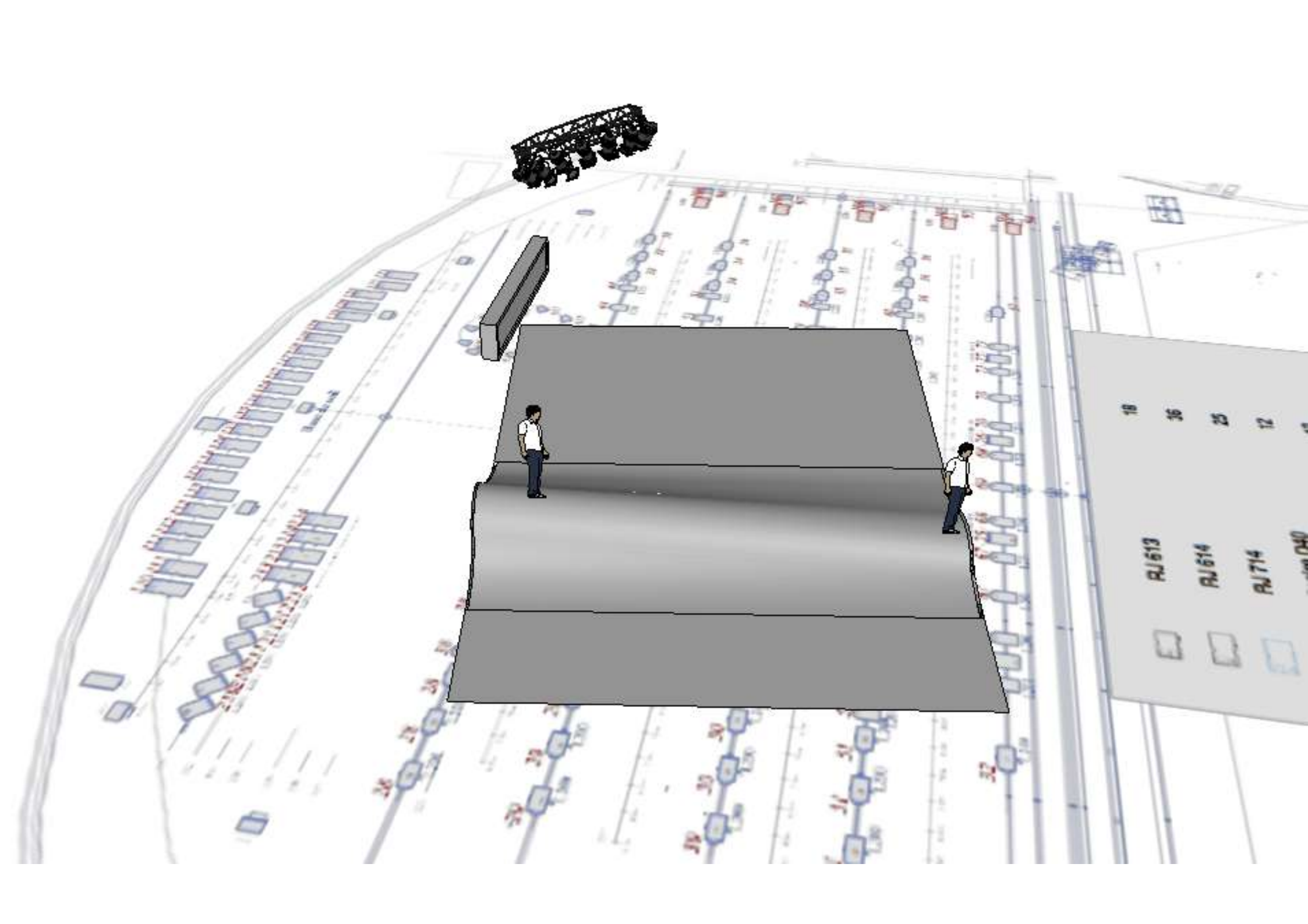
Montanha Russa

VIDEO TECHNICAL RIDER 2019

- 1 - Videoprojecteur Panasonic PT-EW540 (5000 Lumens) ou similaire
- 1 - Support de vidéoprojecteur
- 1 - Signal vidéo hdmi en régie
- 1 - Câblage requis pour transmettre le signal vidéo de la scène à la régie
- 1 - Moniteur de prévisualisation vidéo en régie

Note: Cette fiche technique peut changer en fonction de la scène de présentation

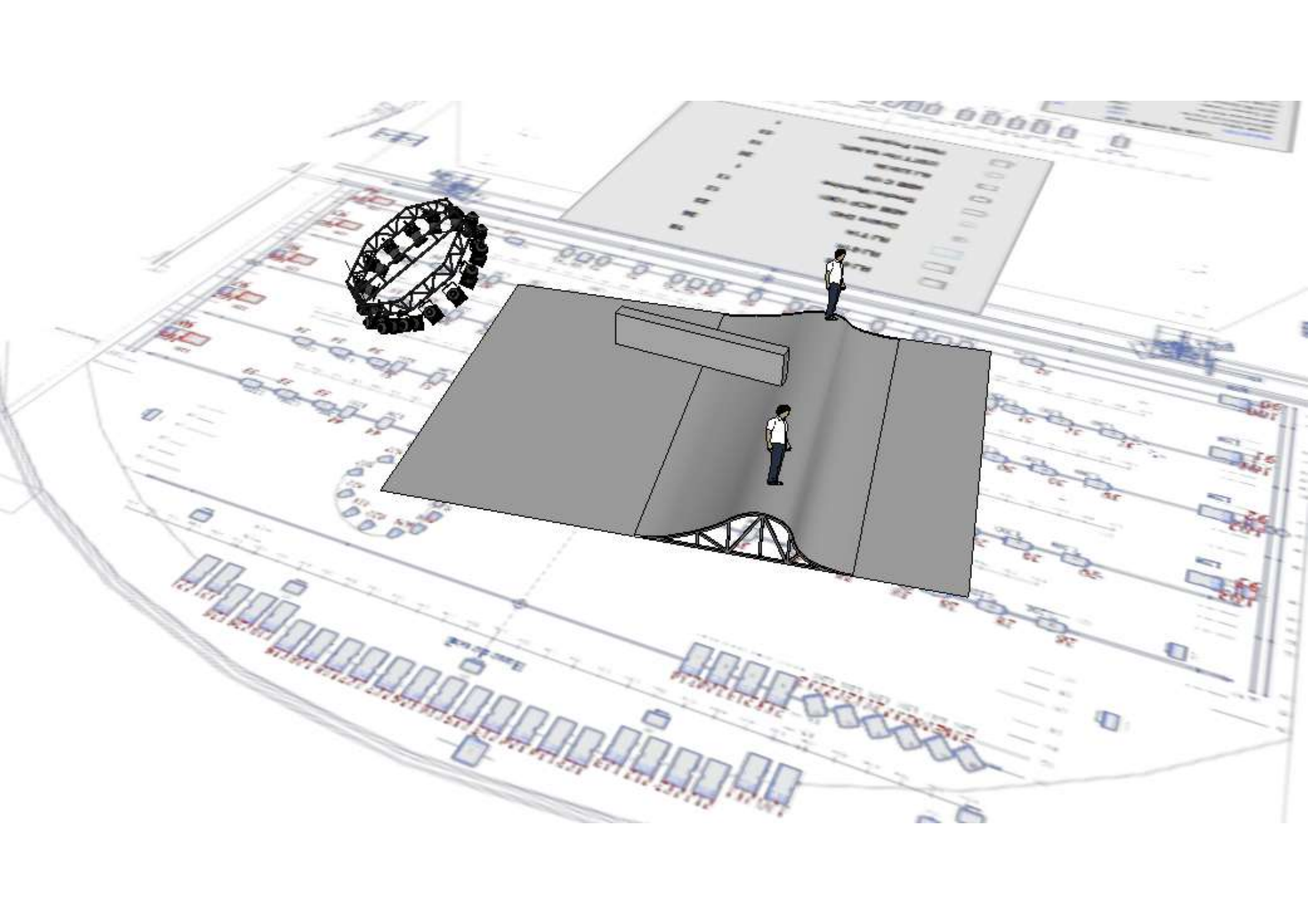


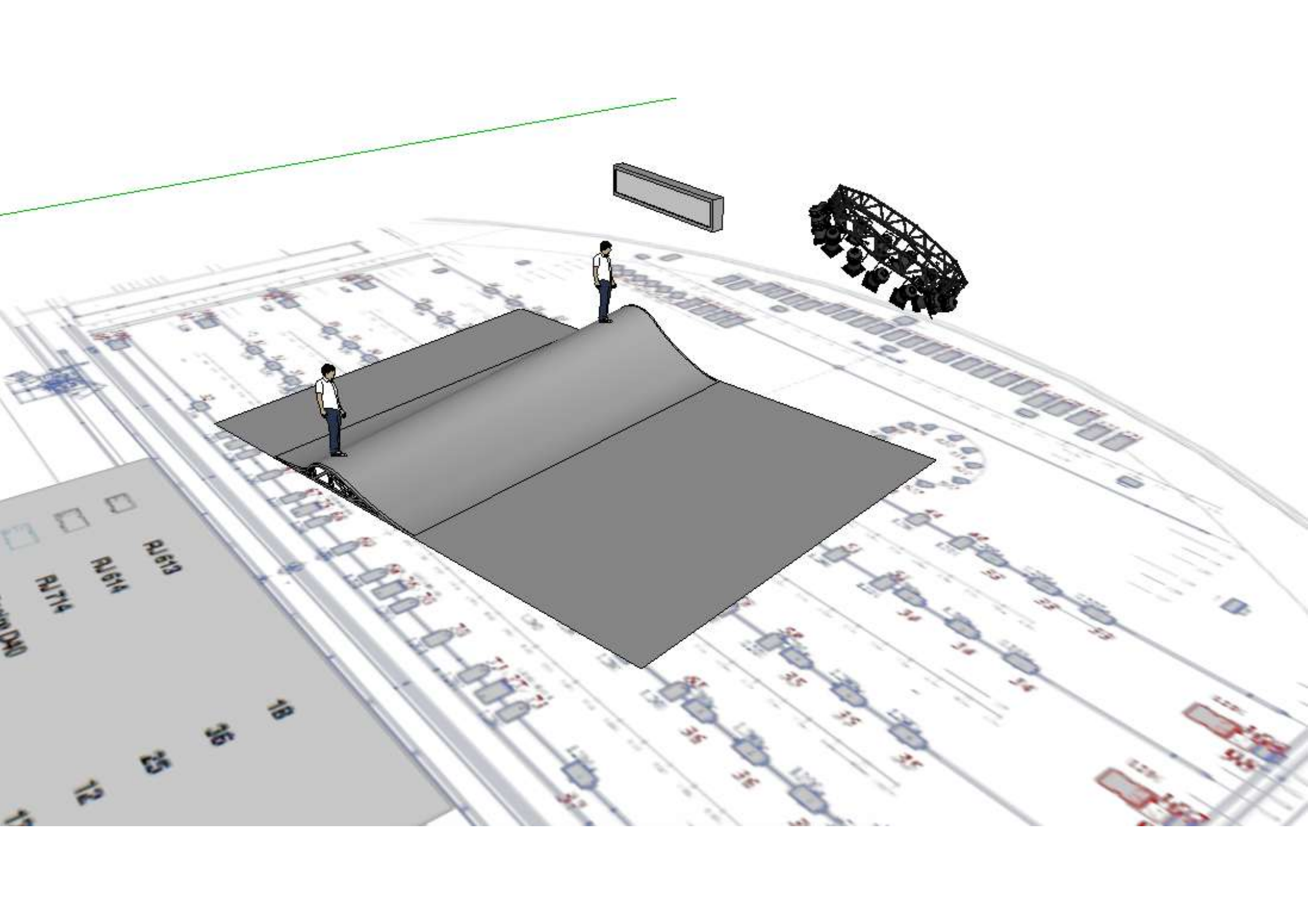


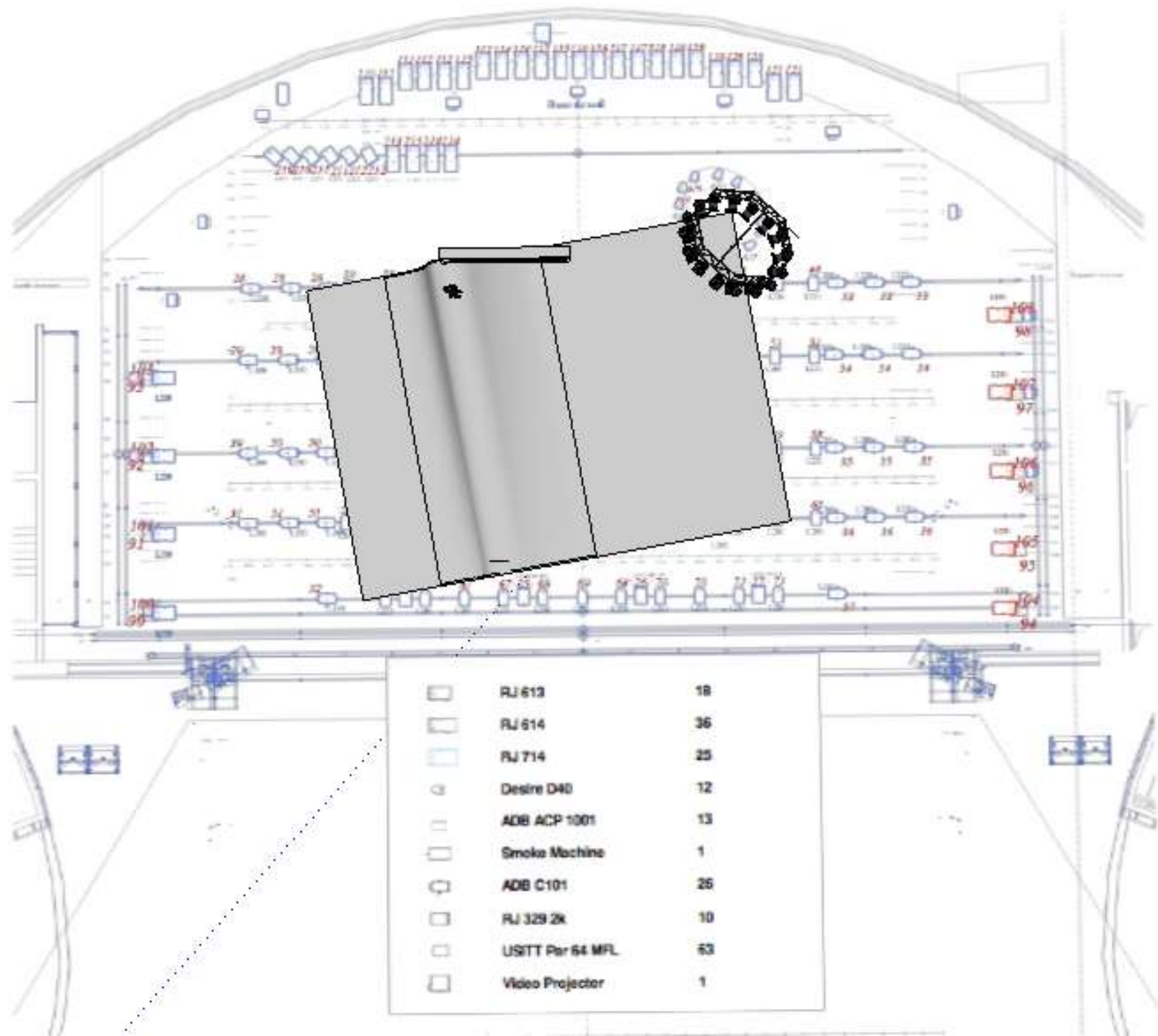
18 36 25 12

RJ613
RJ614
RJ714









	RJ 613	18
	RJ 614	36
	RJ 714	25
	Desire D40	12
	ADB ACP 1001	13
	Smoke Machine	1
	ADB C101	26
	RJ 329 2K	10
	USITT Per 64 MFL	63
	Video Projector	1