

# Montanha Russa

Digressão

FORMIGA ATÓMICA



Encenação Miguel Fragata

Texto Inês Barahona

Desenho de Luz José Álvaro Correia

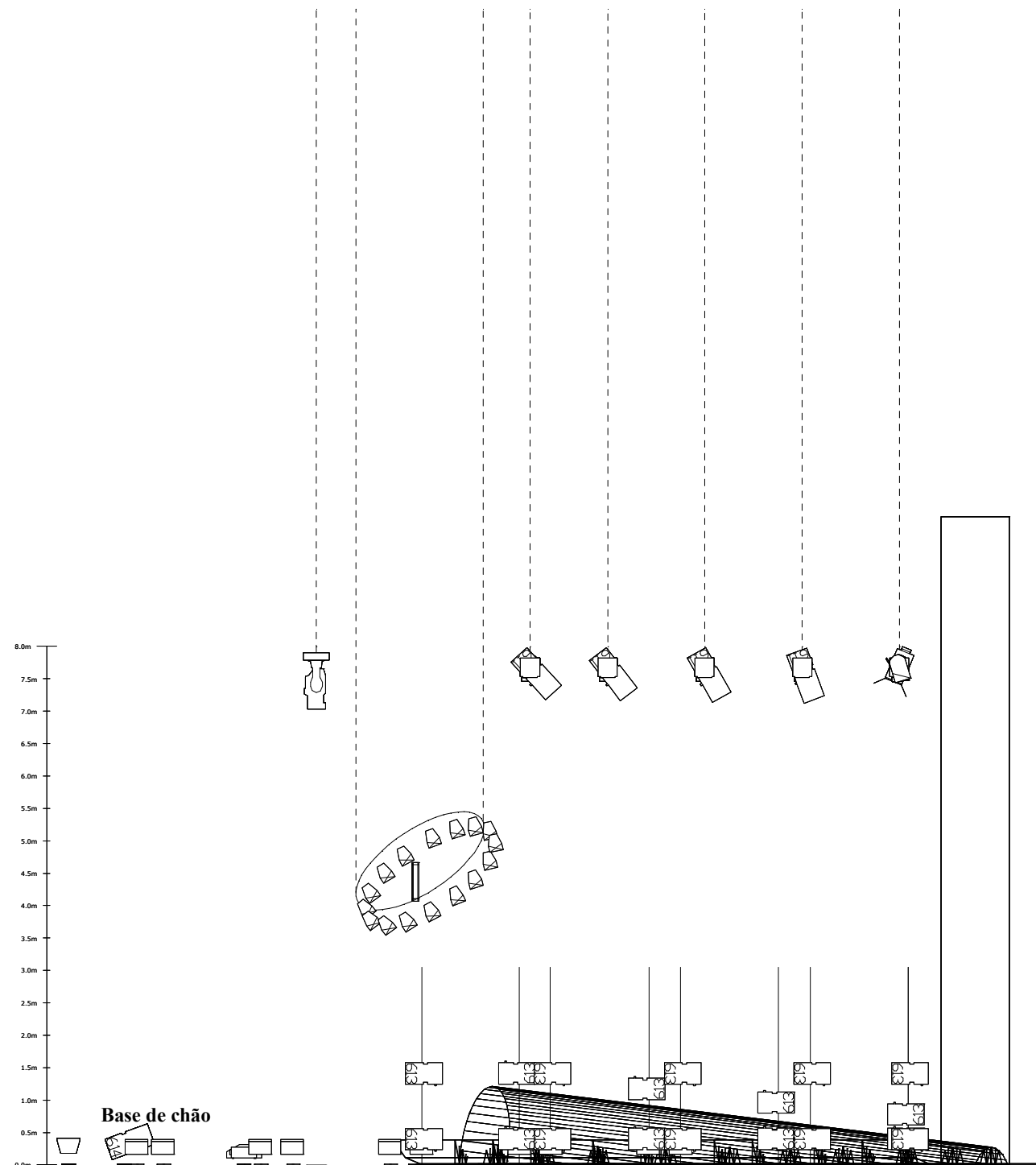
Corte

josecor10@gmail.com 965539583

José Álvaro Correia © 2018

V\_04

03/23/18



	RJ 714	12
	RJ 614 s	25
	RJ 613	18
	RJ 612 s	8
	Source 4 25/50	10
	Par 64 cp61	65
	ADB 1002 JHF	26
	ADB C201	9
	ADB SP 50 5KW	0
	ADB ACP 1001	15
	ColourSource Par	16
	1.2 Fluorescente RJ	0
	Source Four Revolution	10
	Maquina de fumo	1
	Maquina de Haze	1
	Follow Spot	1

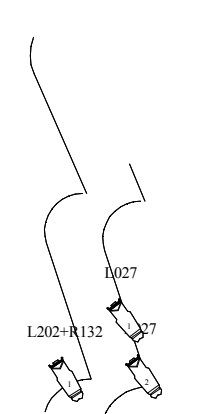
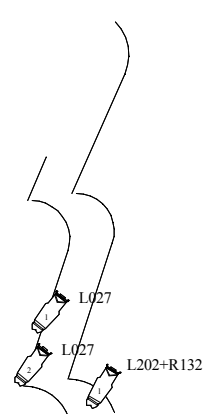
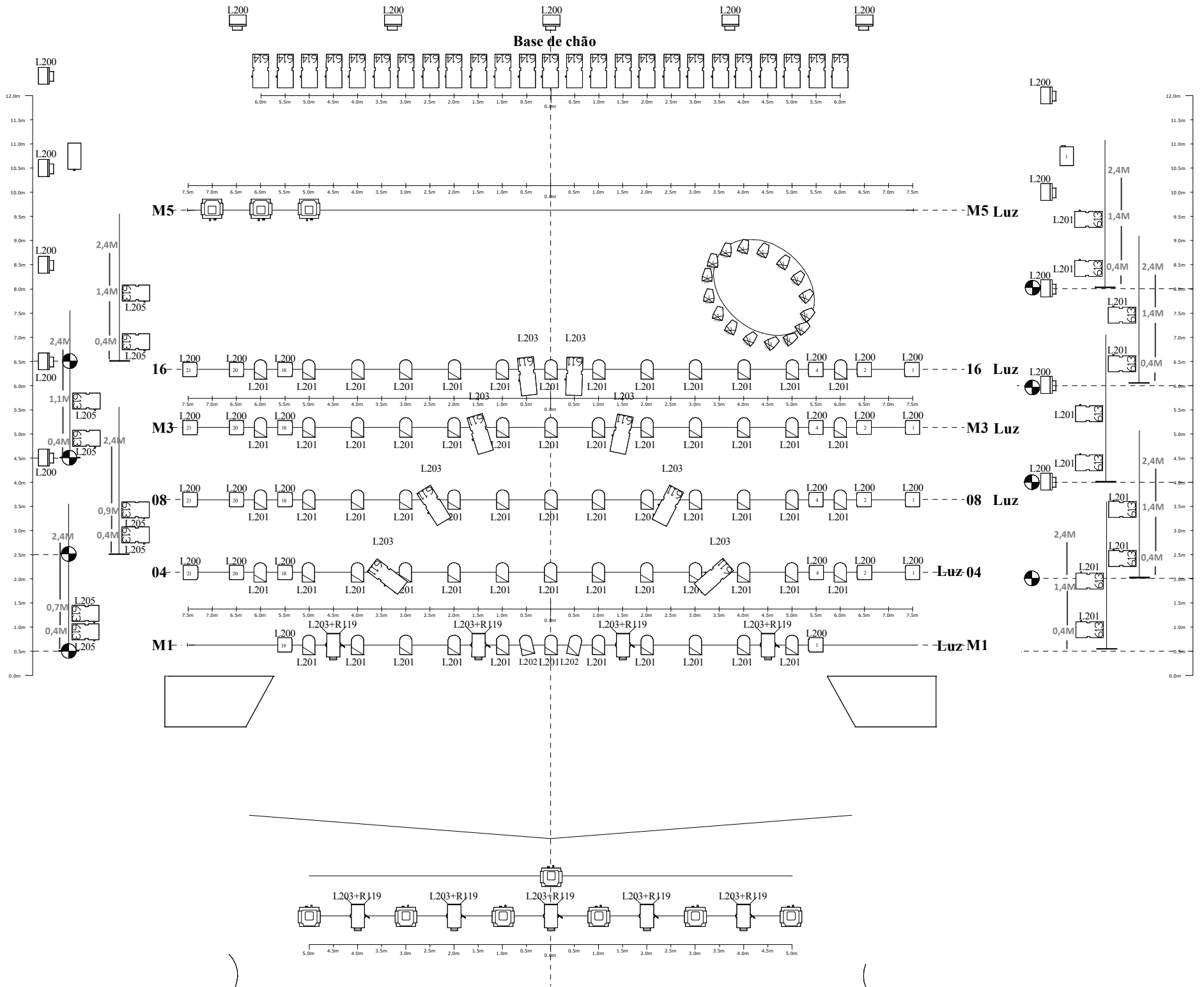
## Lista de Cor

PROJECTOR	COR	Nº
Source 4 - 25/50 Zoom	L027	8
ADB ACP 1001	L200	15
ADB THH 1002 JHF	L200	26
613SX	L201	10
PAR 64	L201	63
PAR 64	L202	2
Source 4 - 25/50 Zoom	L202+R132	2
611SX	L203	8
Strand Lighting Alto PC Mk2	L203+R119 + BD	9

## Notas de Luz

- 1 Levamos mesa de luz, necessitamos dmx 5 pinos na régie e monitor com vga ou hdmi
- 2 Todos os fresnel sem palas e todos os pc com palas
- 3 São necessárias 40 bases de chão
- 4 Todos os etc Revolution com iris
- 5 Follow montado no lado direito da sala

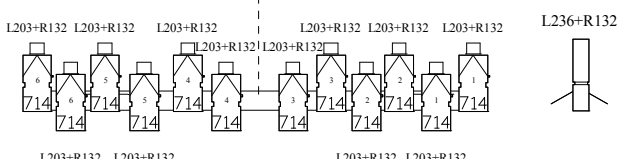




	<b>RJ 714</b>	<b>12</b>
	<b>RJ 614 s</b>	<b>25</b>
	<b>RJ 613</b>	<b>18</b>
	<b>RJ 612 s</b>	<b>8</b>
	<b>Source 4 25/50</b>	<b>10</b>
	<b>Par 64 cp61</b>	<b>65</b>
	<b>ADB 1002 JHF</b>	<b>26</b>
	<b>ADB C201</b>	<b>9</b>
	<b>ADB SP 50 5KW</b>	<b>0</b>
	<b>ADB ACP 1001</b>	<b>15</b>
	<b>ColourSource Par</b>	<b>16</b>
	<b>1.2 Fluorescente RJ</b>	<b>0</b>
	<b>Source Four Revolution</b>	<b>10</b>
	<b>Maquina de fumo</b>	<b>1</b>
	<b>Maquina de Haze</b>	<b>1</b>
	<b>Follow Spot</b>	<b>1</b>

**Lista de Cor**

PROJECTOR	COR	Nº
Source 4 - 25/50 Zoom	L027	8
ADB ACP 1001	L200	15
ADB THH 1002 JHF	L200	26
613SX	L201	10
PAR 64	L201	63
PAR 64	L202	2
Source 4 - 25/50 Zoom	L202+R132	2
611SX	L203	8
Strand Lighting Alto PC Mk2	L203+R119 + BD	9



**Notas de Luz**

- 1 Levamos mesa de luz, necessitamos dmx 5 pinos na régie e monitor com vga ou hdmi
- 2 Todos os fresnel sem palas e todos os pc com palas
- 3 São necessárias 40 bases de chão
- 4
- 5 Follow montado no lado direito da sala
- 6 Todos os par em paralelo, menos o central que fica individual

# Montanha Russa

**Digressão**

**FORMIGA ATÓMICA**

Planta de Luz

Encenação Miguel Fragata  
 Texto Inês Barahona  
 Desenho de Luz José Álvaro Correia

Josecor10@gmail.com 965539583

José Álvaro Correia © 2018

**V\_04**

03/23/18

## 1. PA System

### 1.1. FOH

It shall be a professional system, stereo and phase checked, able to produce high volume if necessary, according to the venue's size. It shall be necessary 108 dB evenly distributed throughout the venue. Full flown systems, line arrays are better. Near and out fills should also be provided. Sub bass on auxiliar send.

Ex: Meyer Sound; D&B, JBL, L Acoustics

### 1.2. Mixing Desk

We will travel with X32 Compact and will need 2 cat5e lines FOH/Stage.  
Stage Box DL151, DL 155

### 1.3. Drive System

Meyer Galileo or Lake Contour.

Klark Teknik DN370

Amplification able to drive the system with a large headroom before saturation.

### 1.4. Intercom F.O.H / Stage Entrance

## 2. Stage

2.1 4 Wedges (1\*12"+1\*1"). (Meyer UPA o similar)

2.2 4 Speaker (1\*12"+1\*1") on speaker stands, 2 on each side of the stage(Meyer UPA)

2.3 Patch List

VIA	INSTRUMENTO	MICRO	OBS
1	Bass	SansampDI*	
2	Bass	M88*	Small Boom Stand
3	Drums L	Orchid DI*	
4	Drums R	Orchid DI*	
5	Guitar 1	M160*	Small Boom Stand
6	Guitar 2	Hallo*	Small Boom Stand
7	Key L	Orchid DI*	
8	Key R	Orchid DI*	
9	Korg	Orchid DI*	
10	Rafa Vocal	RE16*	Big Boom Stand
11	Manela Vocal	RE16*	Big Boom Stand
12	Helder Vocal	M88*	Big Boom Stand
13	Miguel Vocal	58*	Big Boom Stand
14	Vox 1	Beta58*	Straight Stand
15	Vox Fx		
16	Headset 1	DPA 4066+Wireless System	
17	Headset 2	DPA 4066+Wireless System	
18	Headset 3	DPA 4066+Wireless System	
19	Headset 4	DPA 4088+Wireless System	
20	Headset 5	DPA 4066+Wireless System	
23	Spare	DPA 4066+Wireless System	
24	Spare mão	Sure Beta58 Wireless	
25	Audience L	416	Big Boom Stand
26	Audience R	416	Big Boom Stand

\* We bring these mics and DIs

# **MONTANHA RUSSA**

---

TECHNICAL RIDER 2019 v3

2/2

3 Any kind of recording/broadcasting of this show must be previously authorized by or management. Only THE FOH ENGINEER SHALL PROVIDE THE SIGNAL FEED FOR THIS RECORDING.